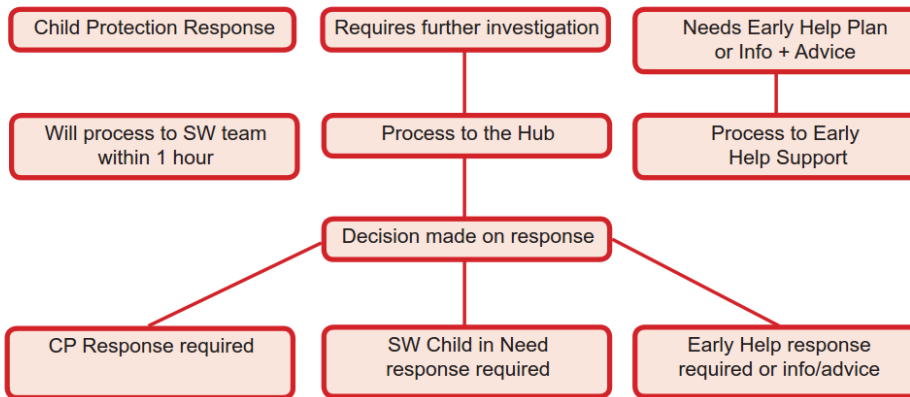

Contacting Cumbria Safeguarding Hub

Consider

- Does this child need an immediate child protection response if so continue to report your concern to the Hub. **IF NOT**
- Could this child be helped by an Early Help Plan ?
- Can I identify other professionals to contribute to an Early Help Plan ?
- If so please seek support from your own service advisor or the Early Help Team to work with the family to prevent escalation of need.

Unless your contact requires an urgent child protection response the Hub will ask you about the recent Early Help Plan and Team around the Family meetings and will make a decision about the level of vulnerability. This will be either :



We hope you will be part of an agreed outcome in line with the Cumbria Threshold Guidance. Where decision have been made following the Hub episode we will provide feedback on the destination of your contact via email or letter. However you are also responsible for knowing what has happened to your concern, so if you have not had any feedback within 72hrs you **MUST** contact the Hub and ask.
